



FOR YOUTH DEVELOPMENT®
FOR HEALTHY LIVING
FOR SOCIAL RESPONSIBILITY

SCOUTS JUST WANNA HAVE FUN

OUTDOOR EDUCATION

Scouts Program – Leader's Guide

YMCA CAMP COPNECONIC
10407 N. FENTON RD
FENTON, MI 48430
WWW.CAMPCOPNECONIC.ORG

Guide Contents

1	Program Guide Cover Page
2	Guide Contents
3	Welcome to the Scouts Program
4	Sample Overnight Schedule
5	Sample Day-Only Schedule
6	Leader's Checklist
7	Health & Safety Guidelines
8	Chaperone Guidelines
10	Business Practices
12	What to Bring List
13	Camp Map
14	Group Detail Form
15-31	Cabin/Lodge Layouts

Welcome to Camp Copneconic's Scouts Program!

We know that every group that comes to camp is unique, and we want our program to match the diverse characteristics of each group we serve. Our Scouts program is designed to give Girl Scout troops a customized camp experience to achieve personal and group goals, fulfill badge requirements, improve leadership skills, and enjoy the outdoors.

Our program is made up of 60+ activities from the following categories:

E-STEM

E-STEM stands for Environmental Science, Technology, Engineering, and Math. We put together the two things we do best: environmental education and hands-on experimental learning to create this category. It's filled with activities to enhance Scouts' understanding of the natural world and explorations of science, technology and math. E-STEM activities include Pond Study, Nature Hikes, Fire Building, Egg Drops, Buoyancy Labs, and so much more.

RECREATION

Camp Copneconic is a premier Outdoor Education facility, but we're a Summer Camp at heart. Recreational activities are synonymous with quintessential camp fun! These activities include, but aren't limited to: Archery, Disc Golf, Kayaking, Mountain Biking and Camp Games.

TEAMBUILDING

Camp provides a perfect environment for personal and group development. By putting Scouts in new surroundings, they're able to learn about themselves and their troop. Our teambuilding activities are developed to encourage communication, camaraderie, and trust in groups. We accomplish this through activities such as Challenge Course, Orienteering, and Creature (a communication/listening challenge).

HIGH ADVENTURE

Our High Adventure activities, including Zip Lines, a Climbing Tower, High Ropes Course, and Giant Swing, give Scouts an opportunity to step outside their comfort zone and challenge themselves. Each activity has a variety of challenges, so no Scout has to push herself further than she feels comfortable doing.

CULTURE/HISTORY/ART

Historical and Cultural Lessons explore the rich history of the past, ranging from local Native American life to Michigan settlers. Scouts are immersed in activities which will take them back in time, and relate stories of the past to their present-day lives. Michigan Country, Native Peoples and Pioneer Crafts are available for students to engage in active historical education.

WINTER

Winter at Camp Copneconic is a sight to behold! We offer a number of activities for Scouts to enjoy the snowy surroundings, including a Toboggan Run, Cross Country Skiing, Snowshoeing, Ice Fishing, and more! Each of these are weather dependent, so when schools select a winter activity, we also ask for a backup choice if Mother Nature doesn't cooperate with our plans!

Sample Overnight Schedule

Friday

7:00	Check in @ Welcome Center
7:45	Camp Orientation @ Main Lodge
8:00	Evening Activity
9:00	Snack
9:30	Head To Cabins
11:00	Lights Out/Quiet Hours

Saturday

8:15	Breakfast
9:00	Activity 1
10:00	Break
10:15	Activity 2
11:15	Break
11:30	Lunch
12:30	Activity 3
1:30	Break
1:45	Activity 4
2:45	Break
3:00	Activity 5
4:00	Break
4:15	Activity 6
5:15	SWAPS!
5:30	Dinner
6:30	Camp Store Open/Balances Due
7:30	Evening Activity
8:30	Snack
9:30	Depart for Cabins
11:00	Lights Out / Quiet Hours

Sunday

8:30	Breakfast
9:30	Pack Up and Clean Cabins
10:30	Departure

Note: Single-Overnight trips are available too! These trips would start on Friday night, departing after Snack on Saturday, or start after Breakfast on Saturday, departing after Breakfast on Sunday.

Sample Day-Only Schedule

Standard Day Trip – Saturday Only

8:30	Arrival & Check-in @ Dining Hall
9:00	Activity 1
10:00	Break
10:15	Activity 2
11:15	Break
11:30	Lunch
12:30	Activity 3
1:30	Break
1:45	Activity 4
2:45	Break
3:00	Activity 5
4:00	Break
4:15	Activity 6
5:15	SWAPS!
5:30	Departure

Extended Day Trip – Saturday Only

8:30	Arrival & Check-in @ Dining Hall
9:00	Activity 1
10:00	Break
10:15	Activity 2
11:15	Break
11:30	Lunch
12:30	Activity 3
1:30	Break
1:45	Activity 4
2:45	Break
3:00	Activity 5
4:00	Break
4:15	Activity 6
5:15	SWAPS!
5:30	Dinner
6:30	Camp Store Open/Balances Due
7:30	Evening Activity
8:30	Snack
9:30	Departure

Leader's Checklist

Please use the following checklist to prepare for your visit to camp.

- ☐ Activity Selections – Please fill out the activity selection form from this guide & fax it to Zach McMurray, or fill it out online from our website. This will be due **two weeks** prior to your visit. Activity requests are accommodated on a first-come, first-serve basis.
- ☐ Group Detail Forms – Along with the activity selection forms, please return a completed group detail form. This will allow us to plan appropriately for any dietary concerns or allergies during your stay.
- ☐ Cabin Assignments – If you have a large group and/or multiple cabins, please assign cabins based on what is listed on your contract. We strongly recommend assigning at least one adult to each cabin for supervision. Groups are required to fill 75% of their bed space. *Cabin layouts and a camp map are included in this guide to assist in this process.*
- ☐ Check In – Regular check in lasts from 7pm–7:30pm on Friday Evening, with a mandatory camp orientation beginning at 7:45. Leaders will need to check in at the Welcome Center during that time to receive their weekend packets and any additional information that may need to be passed on. *If you are checking in at a different time or on Saturday, please contact Zach for an alternate location.*
- ☐ Outside Foods – **NO OUTSIDE FOODS ARE PERMITTED ON SITE** (including inside the Dining Hall, individual cabins, and program spaces). We are a peanut-free facility and often have severe allergies to peanuts or other foods on camp. Meals and snacks will be provided by camp. Anything brought in from outside of camp, ***MUST*** be pre-approved by camp staff.
- ☐ Medications & First Aid – **Each group is responsible for all the administration of medicine and first aid. We advise each group to bring first aid kits. Camp will not provide first aid or distribute medications.**
- ☐ Payment – We will be asking for a final count on Saturday evening after dinner. This will be handled in the Welcome Center. Full payment is expected at this time and booking for next year is handled then too.
- ☐ Questions or Concerns – If at any time you need help, please contact Zach McMurray and he will be more than happy to answer any questions.

Health and Safety Guidelines

EACH GROUP IS RESPONSIBLE FOR ALL ADMINISTRATION OF FIRST AID AND MEDICATION. EACH GROUP MUST BRING FIRST AID SUPPLIES.

- Choose one or two adults to administer all medication and first aid. S/he should keep a log, noting times, symptoms, action taken and dosages. It is Camp's recommendation that this person is First Aid/CPR Certified by a nationally recognized organization.
- Camp suggests packing a small first aid kit with band-aids and gloves for each chaperone or group to carry with them. Chaperones should all be trained ahead of time on emergency procedures and reporting requirements.
- No medication may be kept in cabins with children. This includes adults as well as campers.
- Collect all medication before your departure for camp. Medication includes prescriptions, over-the-counter medications, cough drops, aspirin, Tylenol, ibuprofen, cold medicine, medicated lotions, vitamins, etc. All medications must be stored in a lockable container.
- Leaders should ask all parents ahead of time to find out if there is any necessary information that should be passed along to cabin chaperones. (i.e. Sleepwalking, bed wetting, etc.)
- Many camp staff members are certified in CPR and Standard First Aid. They will assist in case of **EMERGENCY only**. Camp staff will not provide first aid or dispense medication. The trip leader will be responsible for arranging emergency medical transportation.
- **EMERGENCY CARE / TRANSPORTATION:** Dial 9 to get a line out on all Welcome Center phones, 911 to reach central dispatch. Response time is excellent, as long as a specific location at camp is given to dispatch. In an event where an ambulance is not needed, an approved vehicle needs to be designated at all times. This should serve as the primary vehicle in the event a participant from the group needs to go to the hospital.
- Genesys Hospital is located just 5 minutes away, entrance off Baldwin Road.
- A camp staff member will be on call beginning at 7:00pm each night. Program Instructors are available at all evening activities and during Snack. If there are any problems after evening activities, please call the director on call. **Their phone number will be in the window of the Welcome Center.**

Chaperone Guidelines

Your Role as a Chaperone

Congratulations! By agreeing to become a chaperone, you have agreed to an exciting yet challenging experience. The information here is designed to help you prepare for your role as a chaperone. If at any time you are unsure of your role, please ask your Camp Host. We thank you for taking time to attend camp, and hope you have an enjoyable experience!

- You will be the cabin supervisor at night. This means that you are responsible for maintaining a safe environment and ensuring that participants get an adequate amount of sleep. Camp quiet hours begin at 11:00pm.
- As part of your cabin supervisor responsibilities, you will be responsible for the hygiene of campers as well as the cleanliness of the cabin.
- During the day you will travel with an Activity Group. The camp staff will look to you to help manage behavior concerns, or contact teachers if necessary. During some activities it will be completely appropriate for you to participate, however some activities are meant only for the scouts.
- You are responsible for making sure campers are on time for activities and meals.
- Please set good examples of appropriate behavior, language and attitude.
- **All chaperones at camp are expected to follow certain policies. These include:**
 - Smoke only in designated areas, and never in front of campers.
 - Maintain a positive, enthusiastic attitude during programs and activities.
 - Do not allow your behavior to interfere with the campers' learning experience. This includes allowing students to figure out challenges without adult help.
 - Alcohol and drugs are not permitted at Camp Copneconic.
 - For your own protection and the protection of all campers, always use the buddy system when accompanying campers around camp. Always insure the ratio is 2:1, and never be alone with a camper.
 - Physical punishment of any kind (calisthenics, exercise, hitting, kicking, pushing, hazing or deprivation of sleep or food) is strictly prohibited by State Law and Camp Policy.

Chaperone Guidelines (Continued)

Cabin Supervision

It is very important that chaperones be in the cabin anytime there are students in the cabin. Please ensure that campers keep the living area clean and tidy. At the end of each evening's program, campers will return to cabins accompanied by chaperones. Once back in the cabins, it is the chaperones responsibility to make sure all cabin rules are followed for everyone's safety. Including but not limited to: no running, only one person on a bed, bunks are to be used for nothing other than sleeping and any other posted rules. Please help ensure that quiet hours are observed. You'll want your rest!

Program Supervision

Copneconic Program Instructors will lead each activity. **Chaperones are asked to be directly involved in the supervision of students during these activities.** This will insure that behavior issues do not take away from the experience or the safety of the students. Instructors may often offer chaperones the opportunity to join the activity, but this will not always be the case, especially during classes where time and proper supervision are critical to providing campers with a positive experience, such as High Adventure programs. Both, YMCA Camp Copneconic and Group Administration reserve the right to ask participants to leave camp grounds.

Dining Hall Supervision

The main role of a chaperone in the Dining Hall is to help ensure a relaxed, clean and organized environment. This includes reinforcing manners, proper indoor behavior, and clean-up procedures.

Business Practices

Camp Dates

With the demand for specific dates, it is our practice to try and retain your relative dates from the previous year. Sometimes, however, dates need to remain flexible due to holiday fluctuations, calendar changes or adjustments in camp accommodations. In this case, we will always attempt to find similar dates as the previous year. In order to secure your dates for the upcoming year, please book them before your group's departure.

Billing

A 20% non-refundable deposit is required when reserving a camp date. The balance is expected on Saturday night of your visit.

Pricing

Our priority at Flint YMCA Camp Copneconic is to serve our mission. As a not for-profit organization, our rates are established based on a balance between serving our mission and managing our financial responsibilities. In doing this, Camp Copneconic will continually improve the program and facilities. Our pricing practice is simple. We want to continue making the program affordable and charge a fee that keeps us on par with other camping programs as well as the cost of living increases.

Behavior

Our program is designed to function as a partnership between the group and camp staff. As adults, we all share in handling difficult behaviors. The camp staff will intervene in any minor situation that arises. The group is responsible for behavior situations that are deemed detrimental to the activities or the safety of the participants.

Activity Group Sizes

Activity Group sizes are based on the number of campers you will be bringing and the type of classes you have selected. **Activity Group sizes will range from 10 to 18 scouts.** Please do not arrange groups until you have received your schedule from our staff. **Depending on the number of campers you bring, the number of groups you are assigned may change year to year.**

Supervision

It is the responsibility of the Troop to obtain chaperones to accompany each Activity Group and supervise the students in their cabins, as well as in the dining hall. All groups are responsible for making sure chaperones have had their background checked in accordance with state requirements. **We suggest a 1 to 10 ratio.**

Electronics

Please do not bring any electronics to Camp. Camp Copneconic cannot ensure their safety and they disagree with the philosophy that all campers are equal. Our staff will help to monitor lost and found as best as possible but please understand that Camp Copneconic will not be held responsible for any damaged or lost items.

Post Camp

Bed Bug Prevention – The following is information that can be shared with your families:

In response to concerns regarding bed bugs, we want to inform you of the steps Camp Copneconic takes to safeguard your experience and assure your confidence in us. Bed bugs are transferred by luggage in and out of hotels, colleges, camps and even hospitals. At Copneconic, all cabins are checked for insects before a group's arrival and upon their departure. You can help prevent the spread of this nuisance by taking the following precautionary steps. Before taking your luggage into your home:

- Take your clothes, bedding and duffle type bags directly to the washer and dryer (for at least 45 minutes). If you are worried about clothing shrinking, place them in the dryer without washing for the time listed. Make sure any toiletry bags are also included.
- If using luggage, place your luggage in black trash bags and place in the sun for a day or two and/or steam clean your luggage.

What to Bring List

Proper clothing is vitally important to a comfortable stay at camp. We run activities rain or shine. Please make sure to mark everything with the camper's name. This is a multi-season list – please edit accordingly.

Bedding

- ☐ Sleeping bag or blanket
- ☐ Bottom sheet
- ☐ Pillow and pillowcase

Clothing

- ☐ Pajamas
- ☐ Daily changes of socks and underwear – Extra socks in the cold and wet months
- ☐ Light t-shirts
- ☐ Shorts
- ☐ Jeans or pants
- ☐ Sweaters / Sweatshirts
- ☐ Warm or light jacket depending on time of year
- ☐ Rain Gear (VERY IMPORTANT)
- ☐ Waterproof boots
- ☐ Hat and mittens (REQUIRED FOR WINTER)
- ☐ Two pairs of shoes (Bring an old pair of shoes that can get wet and dirty)

Personal Articles

- ☐ Toothpaste and toothbrush
- ☐ Bath towel(s) and washcloth
- ☐ Comb and brush
- ☐ Soap and shampoo
- ☐ Chapstick
- ☐ Sunscreen

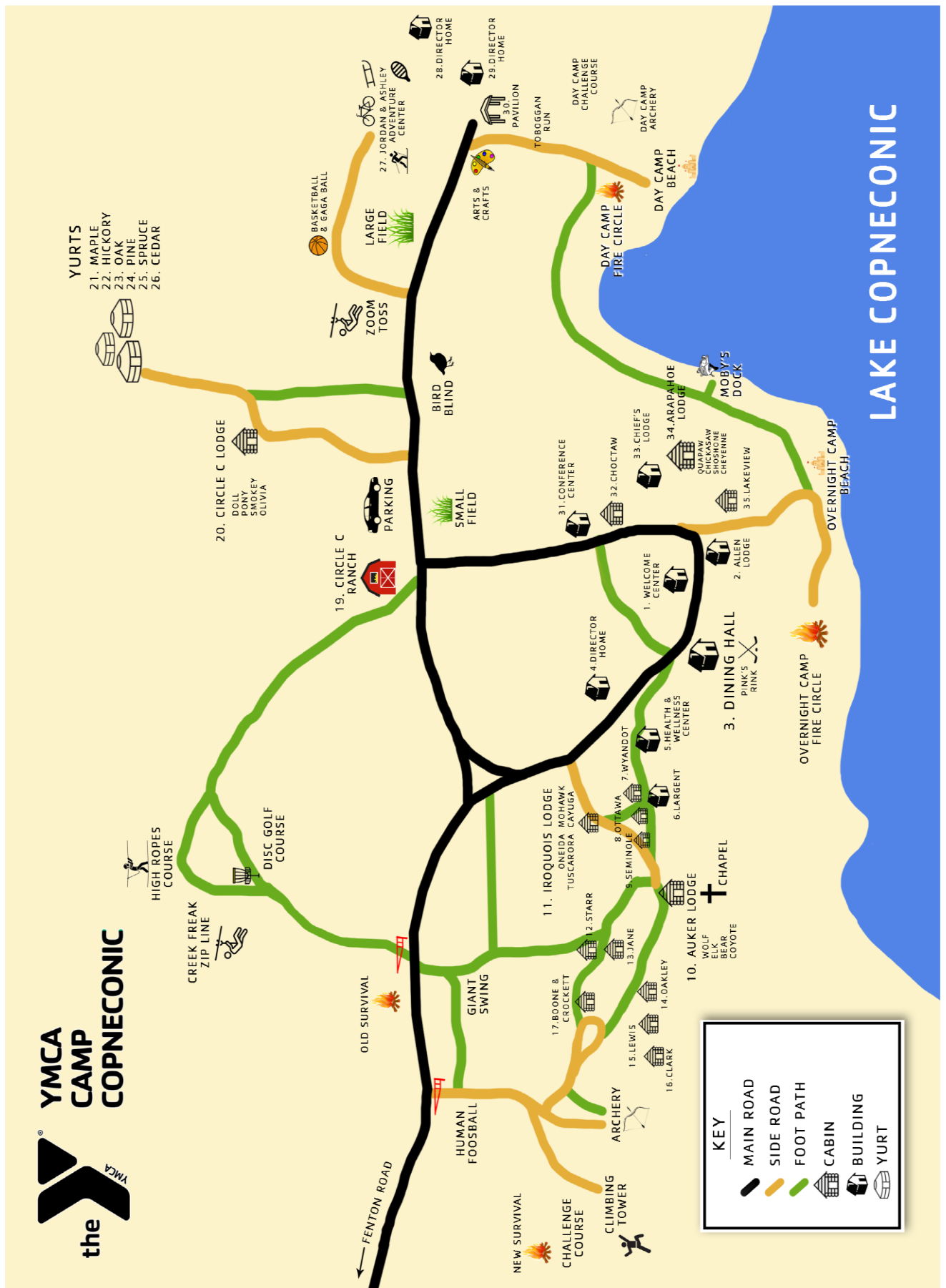
General Equipment

- ☐ Flashlight
- ☐ Large plastic bag for dirty or wet clothing
- ☐ Insect repellent (no sprays please)
- ☐ Water Bottle with name on it

Optional Equipment

- ☐ Pencil, journal or notebook
- ☐ Camera and film (If disposable, please make sure camper's name is on it)
- ☐ Book
- ☐ Hat
- ☐ Money For Camp Store

Please Do Not Bring: Pets/animals, money, cell phones, radios, CD players, iPods/MP3 players, knives, food, candy, gum, matches, cigarettes, firearms & archery equipment, blow dryers, electrical equipment, electronic games, or weapons of any sort. **We are a drug & alcohol free environment.** If alcohol or drugs are found or suspected, authorities may be notified. We cannot guarantee the safety of electronics and are not responsible for lost or damaged items. Thank you for your cooperation in helping us maintain a fun and safe environment!



Camp Copneconic Group Detail Form

Dates Attending:

Group :		Group Contact:
# of Kids:	# of Adults:	Phone Number:

Please fill out the following information, so that our food service staff can best accommodate any dietary restrictions or concerns your group may have. **This information is needed at least 2 weeks prior to your visit.**
Please fax this form to Zach McMurray at 810-629-2128. Thank You!

Dietary Concerns/Restrictions

Allergy/Restriction	#	Please note any specific details here
Vegetarians		
Peanut Allergies		
Gluten Free		
Other		
Other		
Other		
Other		
Other		

If you or a parent would like to speak directly with the Food Service Director about a specific concern you may contact Karen at (810) 629-1206.

Celebrating a Birthday at Camp?

Name	Day	Age

Please Remember: No Outside Foods Permitted**

We are a peanut-free facility and often have **severe** allergies to peanuts and other foods on camp.

***Unless pre-approved by camp staff*

Appendix – Cabin Layouts

16	West Center Smalls (Seminole, Ottawa, Wyandotte)
17	Frontier Lodge
18	Frontier Center Singles (Starr, Jane, Oakley, Lewis, Clark)
19	Iroquois Lodge
20	Auker Lodge
21	Largent Apartment
22	Arapahoe Lodge
23	Arapahoe Apartments
24	Lakeview Lodge
25	Choctaw Cabin
26-27	Conference Center
28	Circle C Lodge
29	Oak Yurt
30	Maple, Hickory, Pine, Cedar Yurts
31	Spruce Yurt

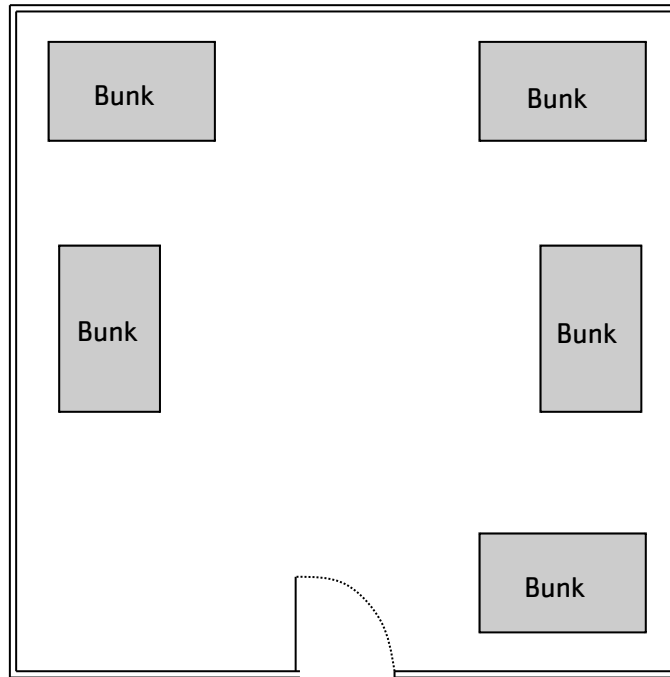
West Center Singles (Heated)

Seminole, Ottawa, Wyandotte

(All single cabins use either Auken or Iroquois Lodge for Bathrooms)

Seminole

1. _____
2. _____
3. _____
4. _____
5. _____
6. _____
7. _____
8. _____
9. _____
10. _____



Wyandotte

1. _____
2. _____
3. _____
4. _____
5. _____
6. _____
7. _____
8. _____
9. _____
10. _____

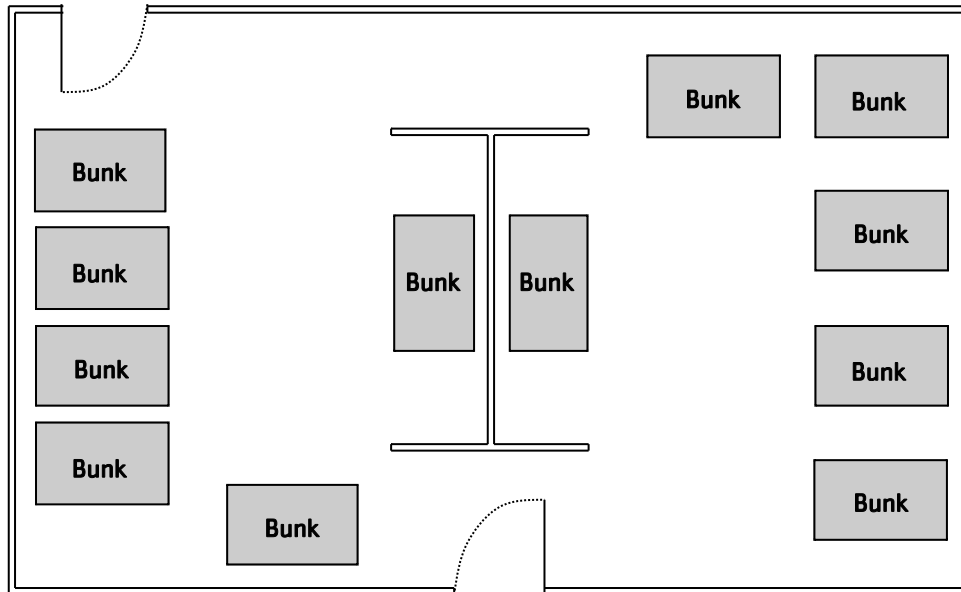
Ottawa

1. _____
2. _____
3. _____
4. _____
5. _____
6. _____
7. _____
8. _____
9. _____
10. _____

NOTES:

Frontier Lodge (Heated)

(All single cabins use either Auken or Iroquois Lodge for Bathrooms)



Crockett

1. _____
2. _____
3. _____
4. _____
5. _____
6. _____
7. _____
8. _____
9. _____
10. _____
11. _____
12. _____

Boone

1. _____
2. _____
3. _____
4. _____
5. _____
6. _____
7. _____
8. _____
9. _____
10. _____
11. _____
12. _____

NOTES:

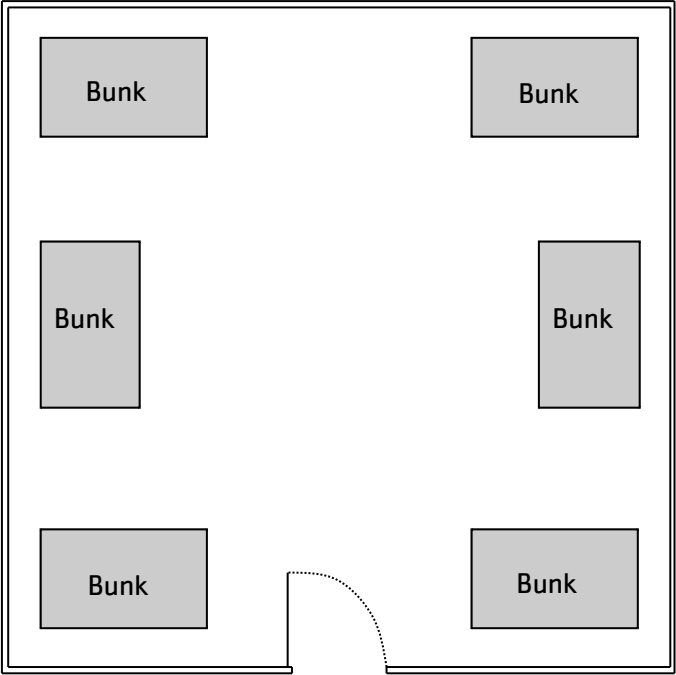
Frontier Center Singles (Heated)

Starr, Jane, Oakley, Lewis, Clark

(All single cabins use either Auken or Iroquois Lodge for Bathrooms)

Starr

- 1. _____
- 2. _____
- 3. _____
- 4. _____
- 5. _____
- 6. _____
- 7. _____
- 8. _____
- 9. _____
- 10. _____
- 11. _____
- 12. _____



Clark

- 1. _____
- 2. _____
- 3. _____
- 4. _____
- 5. _____
- 6. _____
- 7. _____
- 8. _____
- 9. _____
- 10. _____
- 11. _____
- 12. _____

Jane

- 1. _____
- 2. _____
- 3. _____
- 4. _____
- 5. _____
- 6. _____
- 7. _____
- 8. _____
- 9. _____
- 10. _____
- 11. _____
- 12. _____

Oakley

- 1. _____
- 2. _____
- 3. _____
- 4. _____
- 5. _____
- 6. _____
- 7. _____
- 8. _____
- 9. _____
- 10. _____
- 11. _____
- 12. _____

Lewis

- 1. _____
- 2. _____
- 3. _____
- 4. _____
- 5. _____
- 6. _____
- 7. _____
- 8. _____
- 9. _____
- 10. _____
- 11. _____
- 12. _____

NOTES:

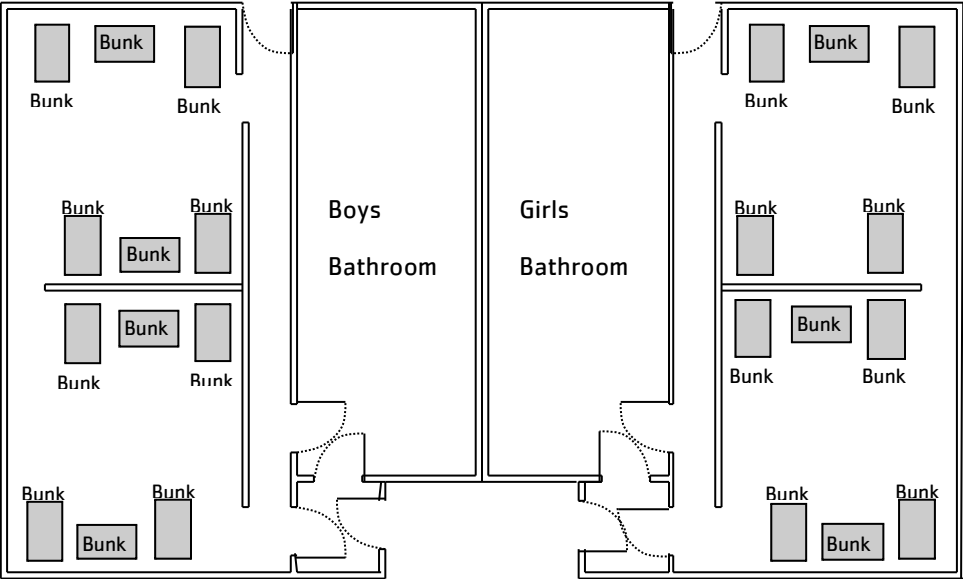
Iroquois Lodge

Oneida

- 1. _____
- 2. _____
- 3. _____
- 4. _____
- 5. _____
- 6. _____
- 7. _____
- 8. _____
- 9. _____
- 10. _____
- 11. _____
- 12. _____

Tuscarora

- 1. _____
- 2. _____
- 3. _____
- 4. _____
- 5. _____
- 6. _____
- 7. _____
- 8. _____
- 9. _____
- 10. _____
- 11. _____
- 12. _____



Cayuga

- 1. _____
- 2. _____
- 3. _____
- 4. _____
- 5. _____
- 6. _____
- 7. _____
- 8. _____
- 9. _____
- 10. _____
- 11. _____
- 12. _____

Mohawk

- 1. _____
- 2. _____
- 3. _____
- 4. _____
- 5. _____
- 6. _____
- 7. _____
- 8. _____
- 9. _____
- 10. _____
- 11. _____
- 12. _____

NOTES:

Auker Lodge

Wolf

1. _____

2. _____

3. _____

4. _____

5. _____

6. _____

7. _____

8. _____

9. _____

10. _____

11. _____

12. _____

13. _____

14. _____

Elk

1. _____

2. _____

3. _____

4. _____

5. _____

6. _____

7. _____

8. _____

9. _____

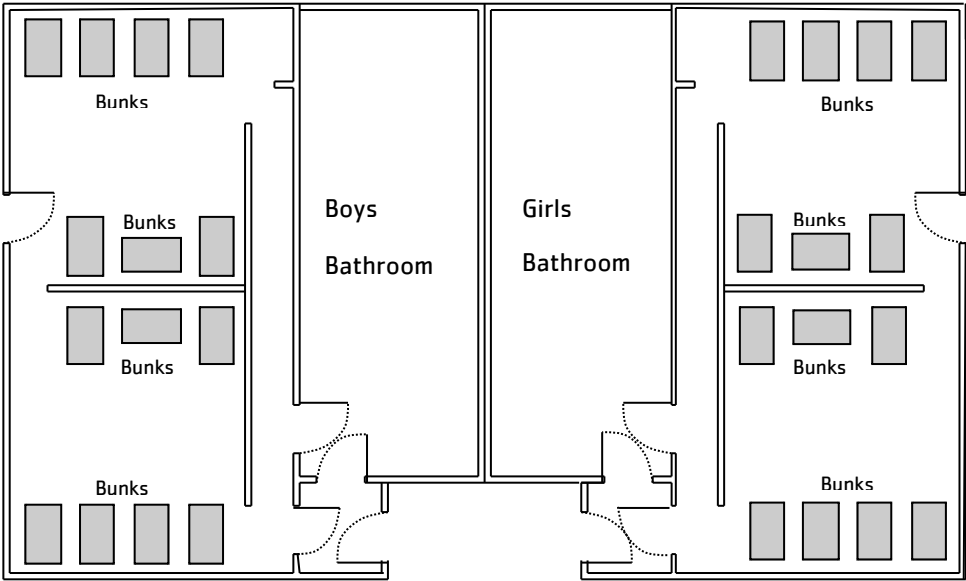
10. _____

11. _____

12. _____

13. _____

14. _____



NOTES:

Coyote

1. _____

2. _____

3. _____

4. _____

5. _____

6. _____

7. _____

8. _____

9. _____

10. _____

11. _____

12. _____

13. _____

14. _____

Bear

1. _____

2. _____

3. _____

4. _____

5. _____

6. _____

7. _____

8. _____

9. _____

10. _____

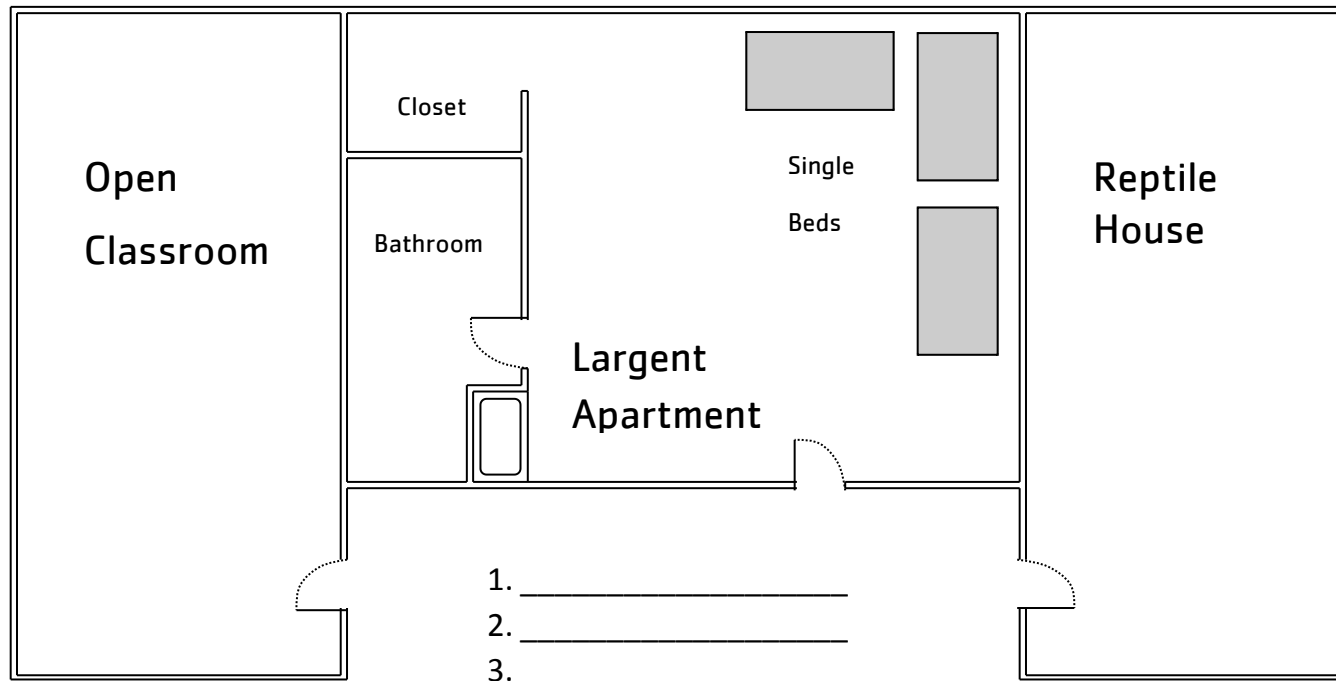
11. _____

12. _____

13. _____

14. _____

Largent Apartment



NOTES:

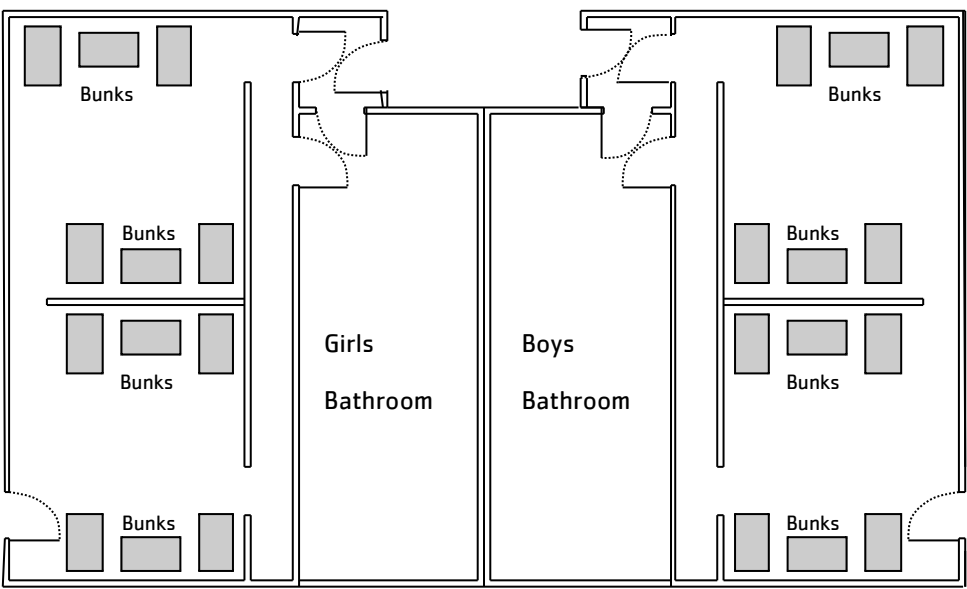
Arapahoe Lodge

Chickasaw

- 1. _____
- 2. _____
- 3. _____
- 4. _____
- 5. _____
- 6. _____
- 7. _____
- 8. _____
- 9. _____
- 10. _____
- 11. _____
- 12. _____

Shoshone

- 1. _____
- 2. _____
- 3. _____
- 4. _____
- 5. _____
- 6. _____
- 7. _____
- 8. _____
- 9. _____
- 10. _____
- 11. _____
- 12. _____



NOTES:

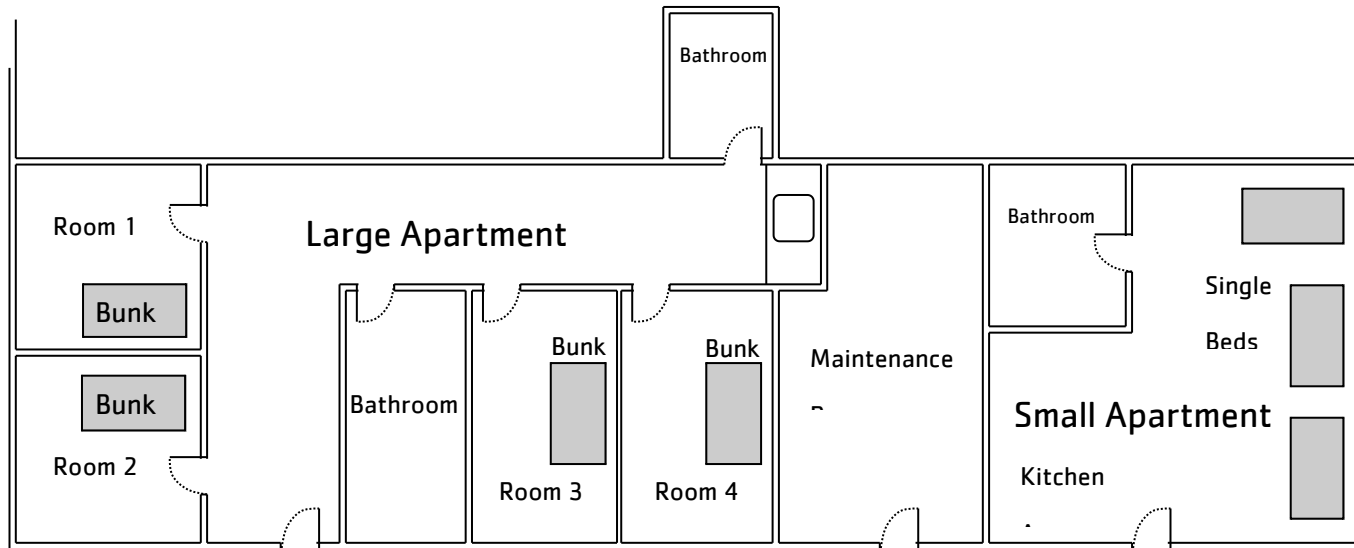
Quapaw

- 1. _____
- 2. _____
- 3. _____
- 4. _____
- 5. _____
- 6. _____
- 7. _____
- 8. _____
- 9. _____
- 10. _____
- 11. _____
- 12. _____

Cheyenne

- 1. _____
- 2. _____
- 3. _____
- 4. _____
- 5. _____
- 6. _____
- 7. _____
- 8. _____
- 9. _____
- 10. _____
- 11. _____
- 12. _____

Arapahoe Apartments



Room 1

1. _____
2. _____

Room 3

1. _____
2. _____

Small Apartment

1. _____
2. _____
3. _____

Room 2

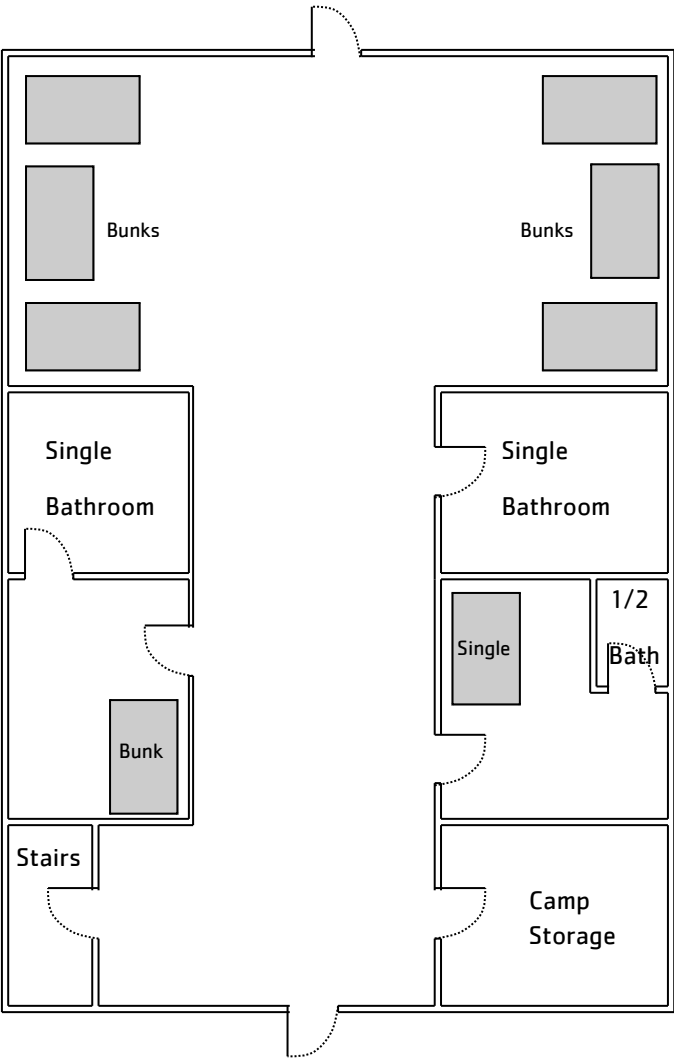
1. _____
2. _____

Room 4

1. _____
2. _____

NOTES:

Lakeview Lodge



Back Cabin

1. _____
2. _____
3. _____
4. _____
5. _____
6. _____
7. _____
8. _____
9. _____
10. _____
11. _____
12. _____

Bunk Room

1. _____
2. _____

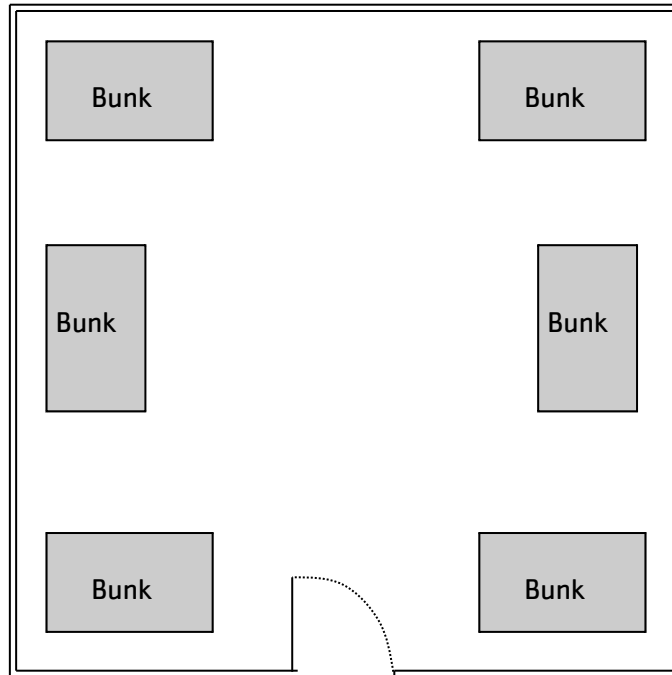
Single Room

1. _____

NOTES:

Choctaw Cabin (Heated)

(Choctaw cabin uses Arapahoe Lodge for Bathrooms)

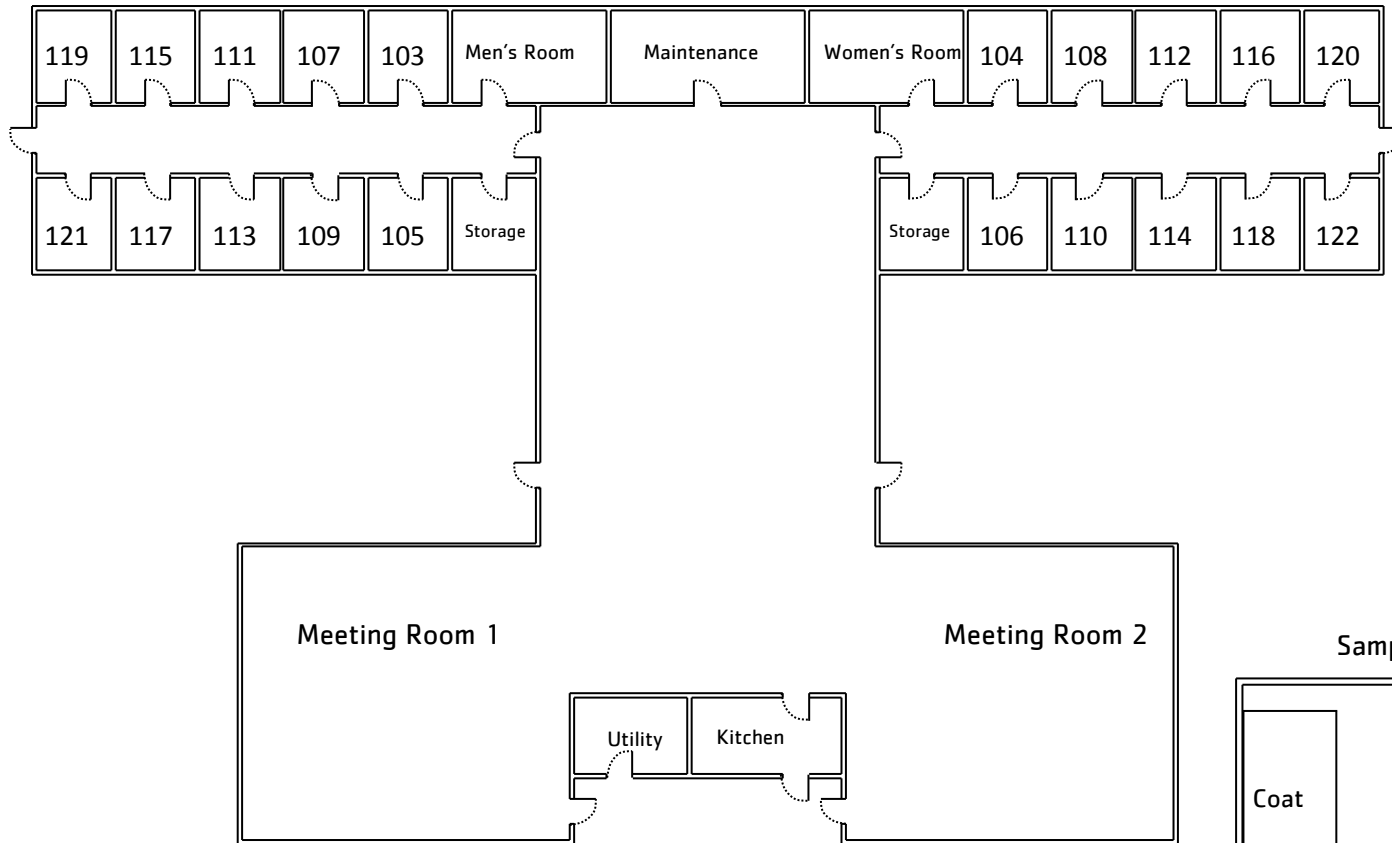


Choctaw

1. _____
2. _____
3. _____
4. _____
5. _____
6. _____
7. _____
8. _____
9. _____
10. _____
11. _____
12. _____

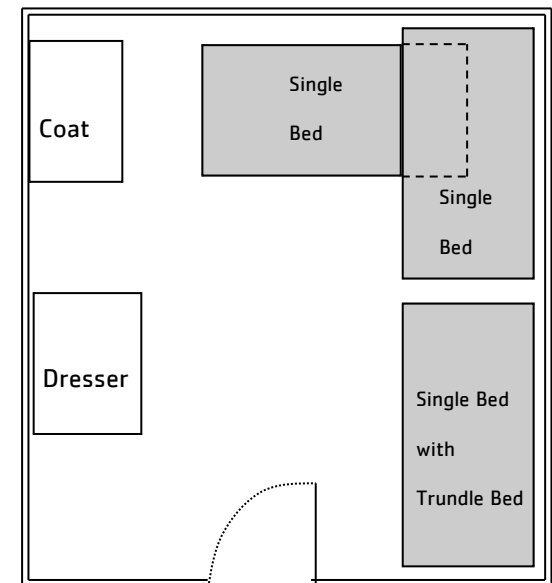
NOTES:

Conference Center



NOTES:

Sample of Individual Room



Conference Center Room Assignments

NORTH WING ROOM ASSIGNMENTS *(Boys Side)*

119	115	111	107	103
1. _____	1. _____	1. _____	1. _____	1. _____
2. _____	2. _____	2. _____	2. _____	2. _____
3. _____	3. _____	3. _____	3. _____	3. _____
4. _____	4. _____	4. _____	4. _____	4. _____
121	117	113	109	105
1. _____	1. _____	1. _____	1. _____	1. _____
2. _____	2. _____	2. _____	2. _____	2. _____
3. _____	3. _____	3. _____	3. _____	3. _____
4. _____	4. _____	4. _____	4. _____	4. _____

SOUTH WING ROOM ASSIGNMENTS *(Girls Side)*

104	108	112	116	120
1. _____	1. _____	1. _____	1. _____	1. _____
2. _____	2. _____	2. _____	2. _____	2. _____
3. _____	3. _____	3. _____	3. _____	3. _____
4. _____	4. _____	4. _____	4. _____	4. _____
106	110	114	118	122
1. _____	1. _____	1. _____	1. _____	1. _____
2. _____	2. _____	2. _____	2. _____	2. _____
3. _____	3. _____	3. _____	3. _____	3. _____
4. _____	4. _____	4. _____	4. _____	4. _____

Pony

1. _____
2. _____
3. _____
4. _____
5. _____
6. _____
7. _____
8. _____
9. _____
10. _____
11. _____
12. _____
13. _____
14. _____

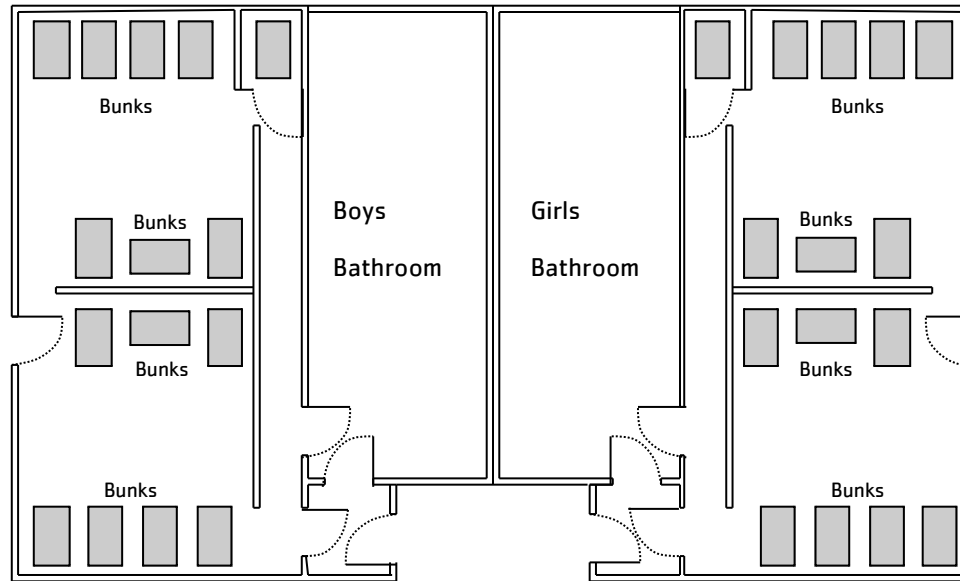
Private Bunk

1. _____
2. _____

Smokey

1. _____
2. _____
3. _____
4. _____
5. _____
6. _____
7. _____
8. _____
9. _____
10. _____
11. _____
12. _____
13. _____
14. _____

Circle C Lodge



NOTES:

Doll

1. _____
2. _____
3. _____
4. _____
5. _____
6. _____
7. _____
8. _____
9. _____
10. _____
11. _____
12. _____
13. _____
14. _____

Private Bunk

1. _____
2. _____

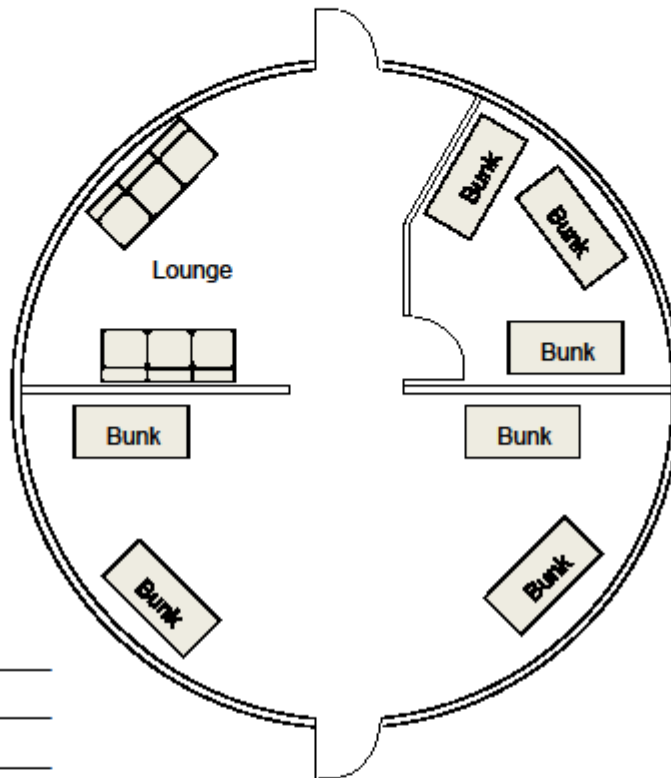
Olivia

1. _____
2. _____
3. _____
4. _____
5. _____
6. _____
7. _____
8. _____
9. _____
10. _____
11. _____
12. _____
13. _____
14. _____

Yurt (14 Beds) (Heated)

Oak

(Yurts use Circle C Lodge for bathrooms.)



Housing

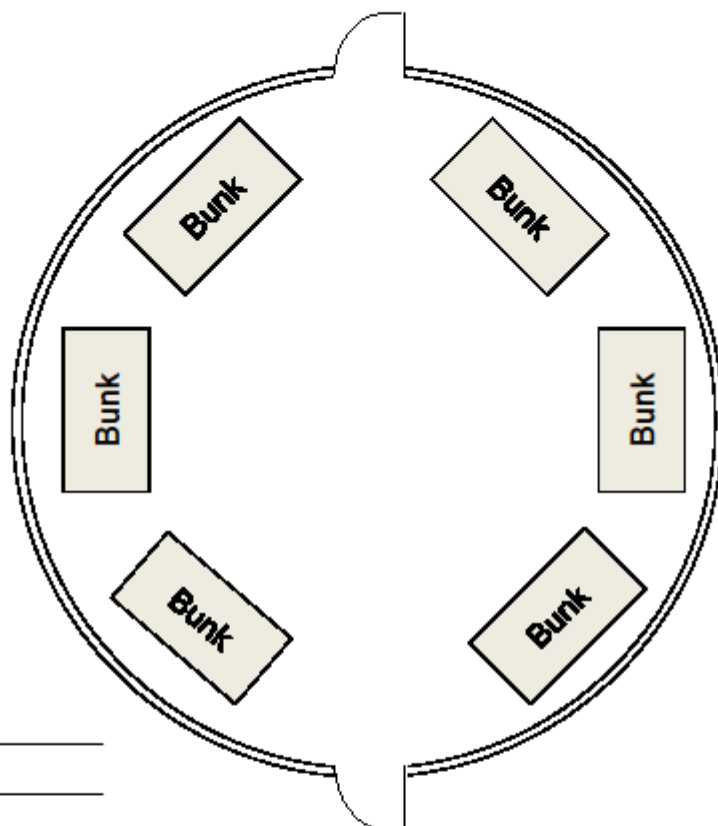
1. _____
2. _____
3. _____
4. _____
5. _____
6. _____
7. _____
8. _____
9. _____
10. _____
11. _____
12. _____
13. _____
14. _____

NOTES:

Yurts (12 Beds) (Heated)

Maple, Hickory, Pine, Cedar

(Yurts use Circle C Lodge for bathrooms.)



Housing

1. _____
2. _____
3. _____
4. _____
5. _____
6. _____
7. _____
8. _____
9. _____
10. _____
11. _____
12. _____

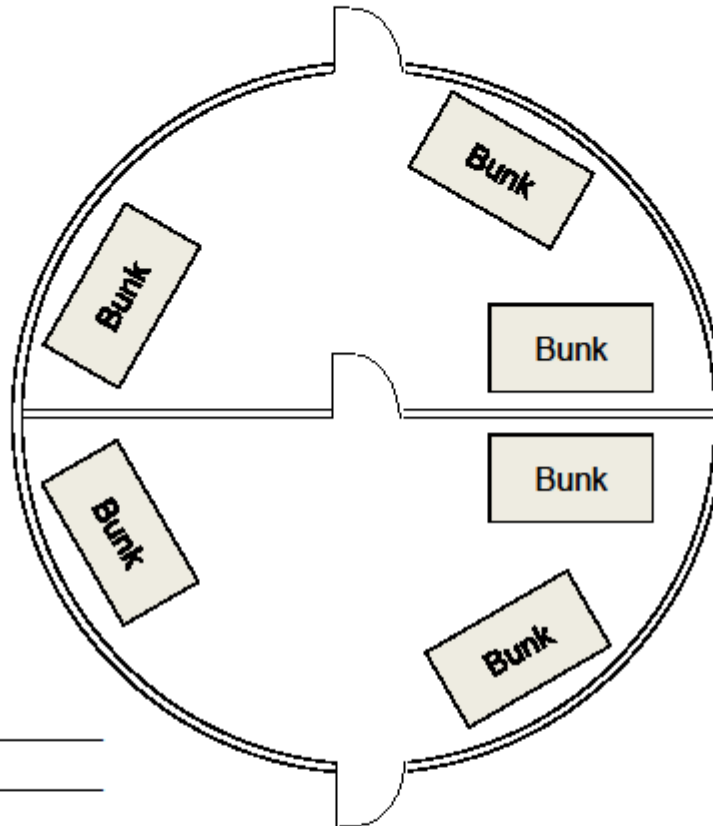
NOTES:

--

Yurt (12 Beds) (Heated)

Spruce

(Yurts use Circle C Lodge for bathrooms.)



Housing

1. _____
2. _____
3. _____
4. _____
5. _____
6. _____
7. _____
8. _____
9. _____
10. _____
11. _____
12. _____

NOTES: